

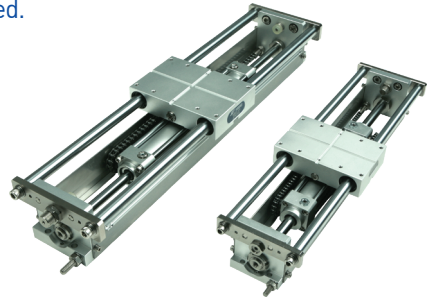
SLIDE CYLINDER

RHW-20, 30, 40, 50, 63, 80

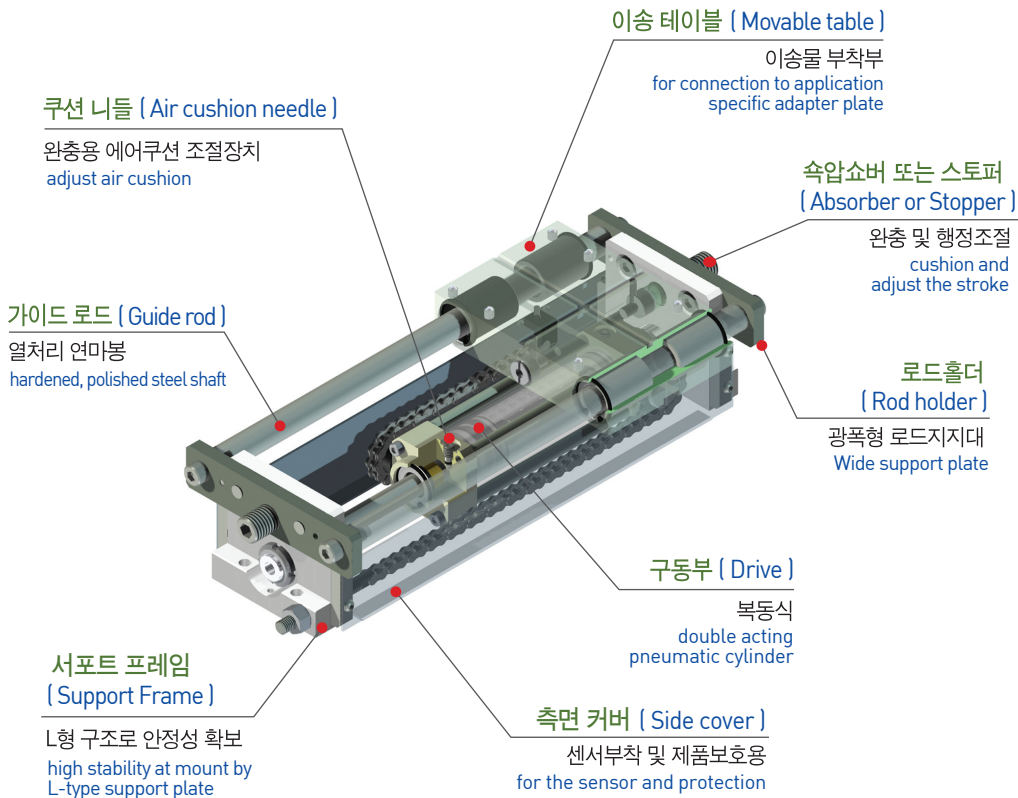


특징 (Character)

- 체인을 이용 행정거리를 2배 확대한 배속 슬라이드 실린더로
일반 슬라이드 실린더의 2배로 고속운전 가능
Double speed slide cylinder on a twice enlarged stroke distance by using chain. possible to make high speed than usual cylinder speed.
- 표준형에 비해 가이드간 거리가 넓어 모멘트에 대한 특성이 우수하고
편하중이 걸리는 곳에 적합
As compared with standard, distance among guides is wide, moment's feature is excellent and suitable for side load.
- 본기종은 광폭형(RHW)이며, 그외 표준형(RH), 보호카바형(RHC), 슬림형(RHS)등의 기종이 있음
This type is wide width, and there are standard(RH), protection cover(RHC) and slim(RHS), etc.
- 성력화용 실린더로 긴행정이 가능하며 행정의 조정이 가능
As a cylinder for elimination of labor, being possible to be long stroke and to adjust the stroke.
- 자계의 영향을 받지 않는 근접, 리미트 S/W 부착이 가능
Being possible to attach proximity unaffected by a magnetic field and limit S/W

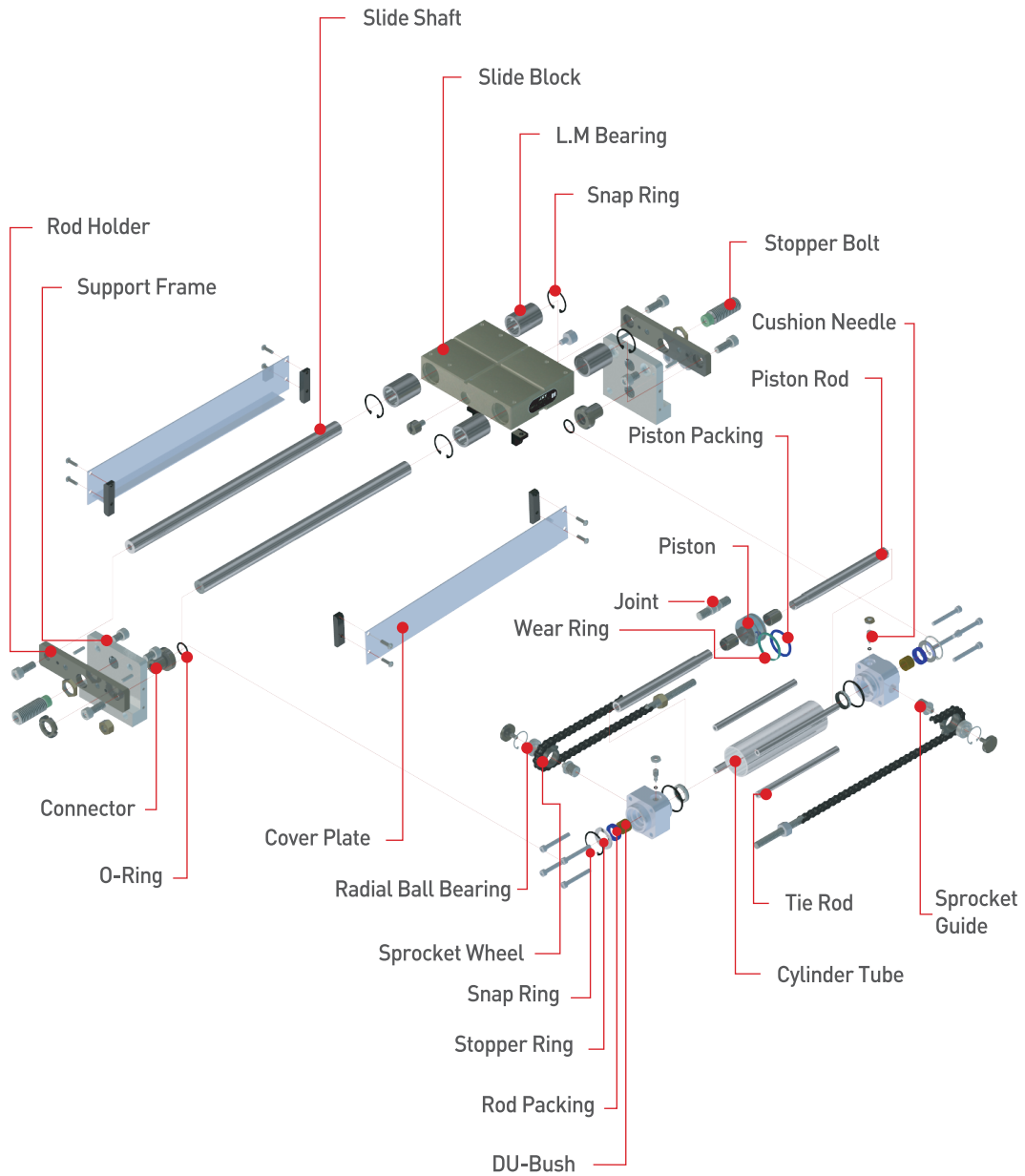


광폭형 배속실린더 (Wide type double speed)



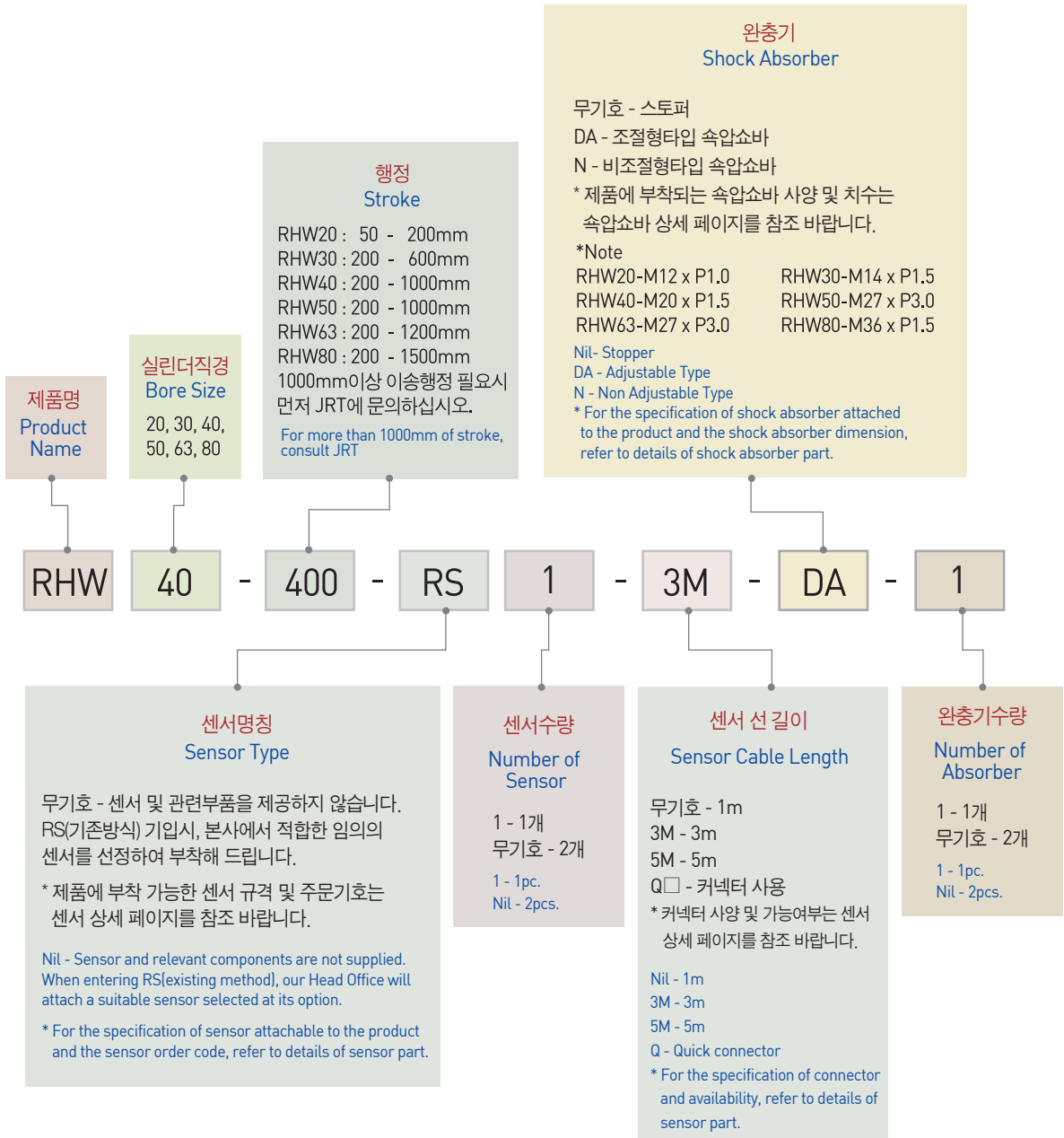
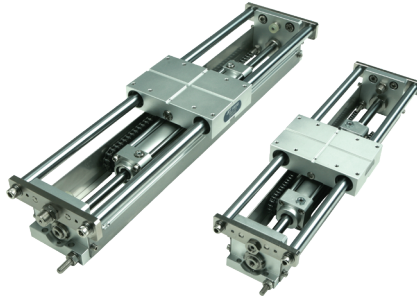
부품분해도 (Exploded view)

※ 본 분해도는 한 제품을 예시하였으므로 기종별로 차이가 있을 수 있습니다.
 ※ This exploded view illustrates a certain product only. The contents may vary by product models.



RH
RHC
RHW
RHS
TL
GC
SC
JC
NE
NT
DG
NO
NF
JO
JSR9
JCR9

주문기호 (Ordering Code)



▣ 제품사양 (Specification)

P=공기압력(bar) , St=행정(mm)
P=Air Pressure(bar) , St=Stroke(mm)

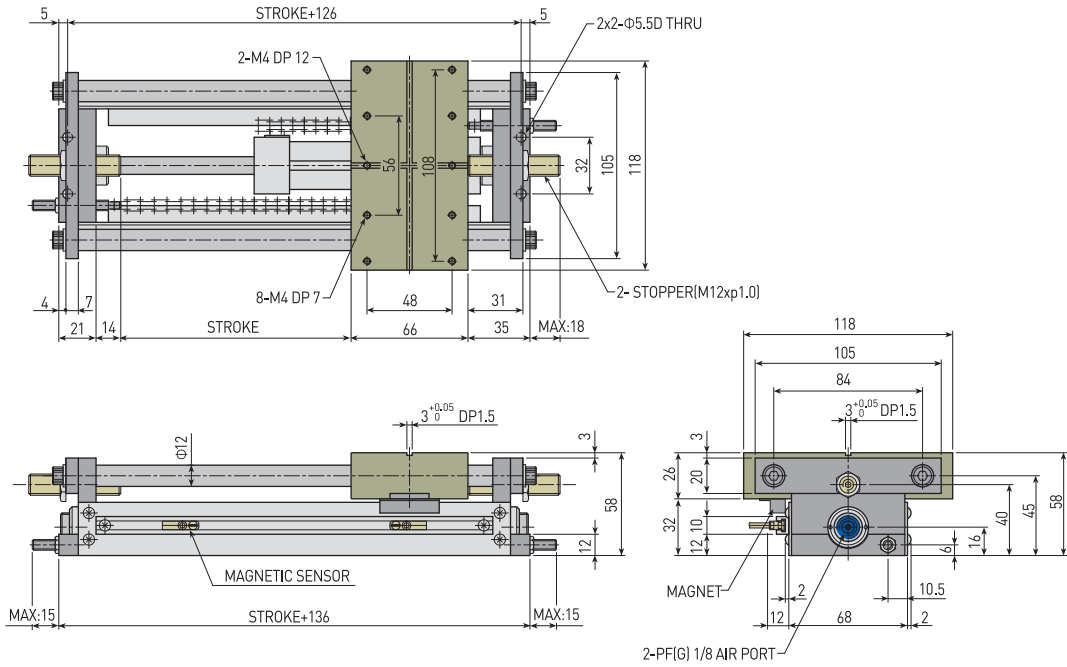
제품명칭 Products Name	RHW20	RHW30	RHW40	RHW50	RHW63	RHW80	단위 Unit
최대행정 Max Stroke	200	600	1000	1000	1200	1500	mm
최소행정 Min Stroke	50	200	200	200	200	200	mm
전진추력 Push Power	11.58(P-1.8)	24.53(P-1.5)	51.01(P-1.2)	80.44(P-0.9)	127.53(P-0.7)	210.92(P-0.7)	N
후진추력 Pull Power	11.58(P-1.8)	24.53(P-1.5)	51.01(P-1.2)	80.44(P-0.9)	127.53(P-0.7)	210.92(P-0.7)	N
최대이송속도 Max. Speed	1,000	1,000	1,000	800	500	500	mm/sec
최소이송속도 Min. Speed	300	300	250	250	150	150	mm/sec
제품중량 Weight	1.43+0.004xSt	3.95+0.007xSt	6.53+0.011xSt	11.5+0.014xSt	14.6+0.02xSt	19.7+0.035xSt	kg
배관접속구 Fitting size	PF(G) 1/8	PF(G) 1/8	PF(G) 1/8	PF(G) 1/4	PF(G) 1/4	PF(G) 1/2	
1사이클당 공기소모량 Air consumption quantity	0.2xSt	0.5xSt	1.1xSt	1.6xSt	2.6xSt	4.3xSt	cm ³
반복정밀도 Repetition Accuracy	±0.1						mm
사용압력 Operating pressure	3 to 7						bar
주위온도 Ambient temperature	-5 to 60						℃
윤활 Lubrication	불필요 Needless						

RH
RHC
RHW
RHS
TL
GC
SC
JC
NE
NT
DG
NO
NF
JO
JSR9
JCR9

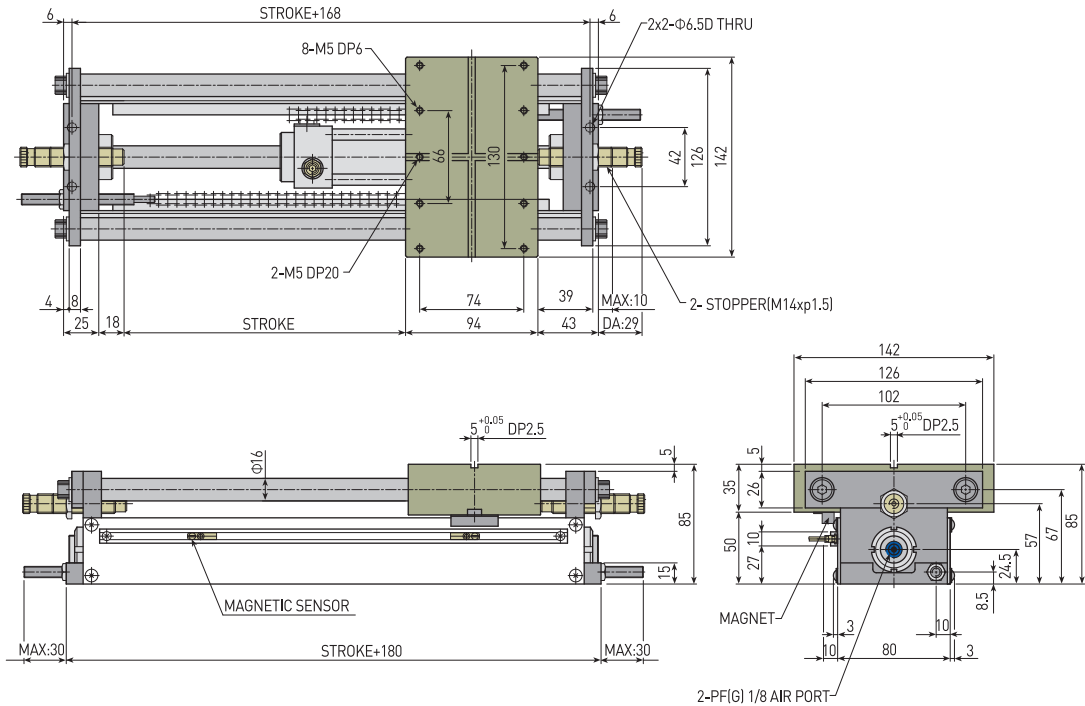
▣ NOTE

--

RHW-20

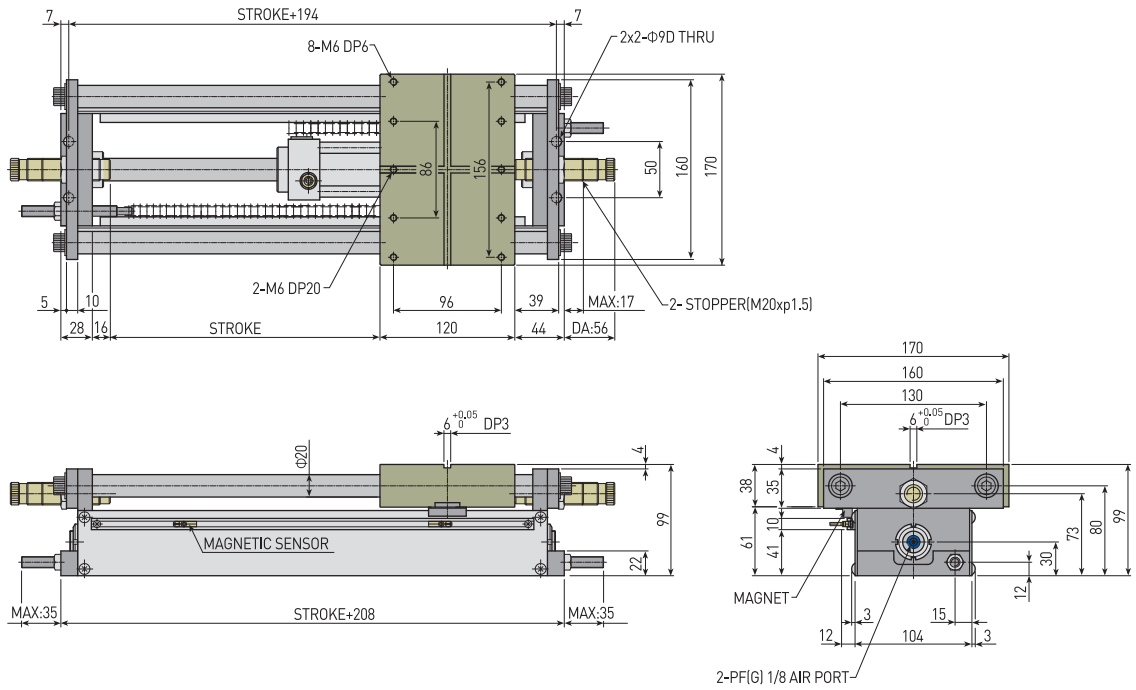


RHW-30

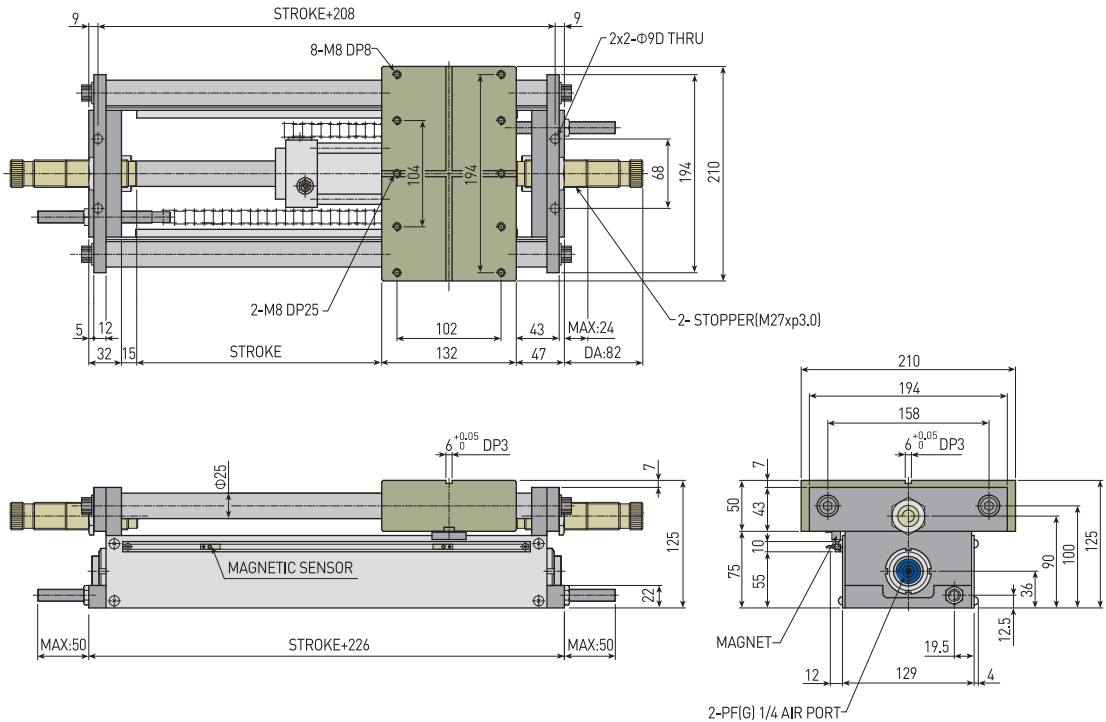


RH
RHC
RHW
RHS
TL
GC
SC
JC
NE
NT
DG
NO
NF
JO
JSR9
JCR9

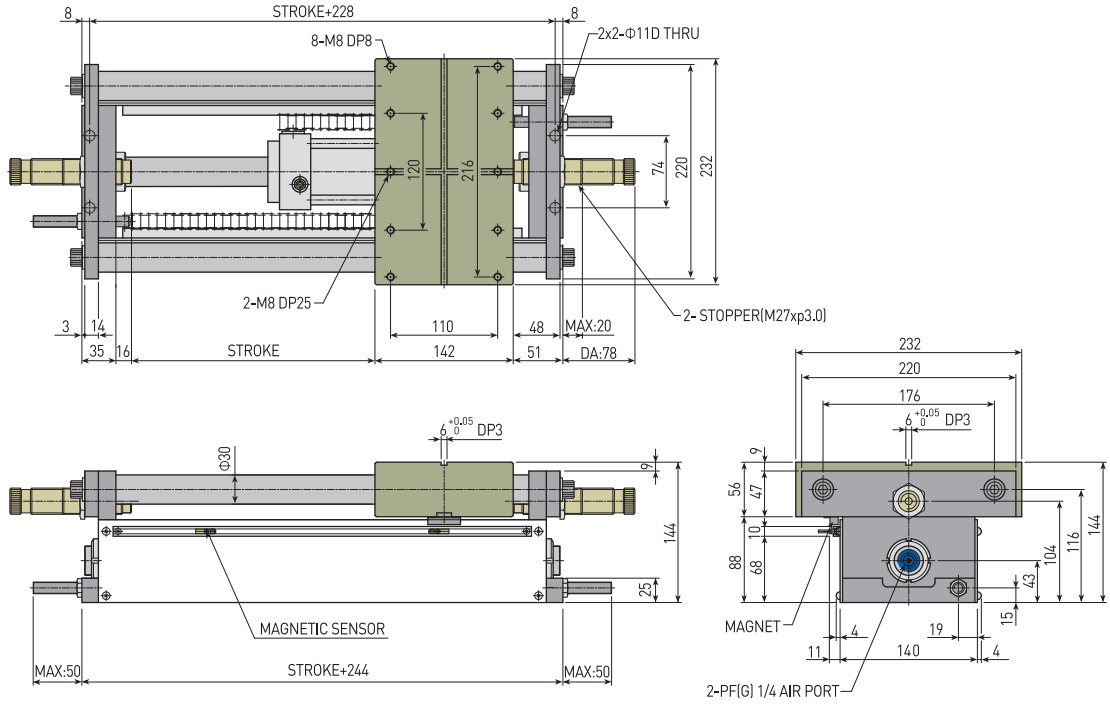
RHW-40



RHW-50



RHW-63



RHW-80

